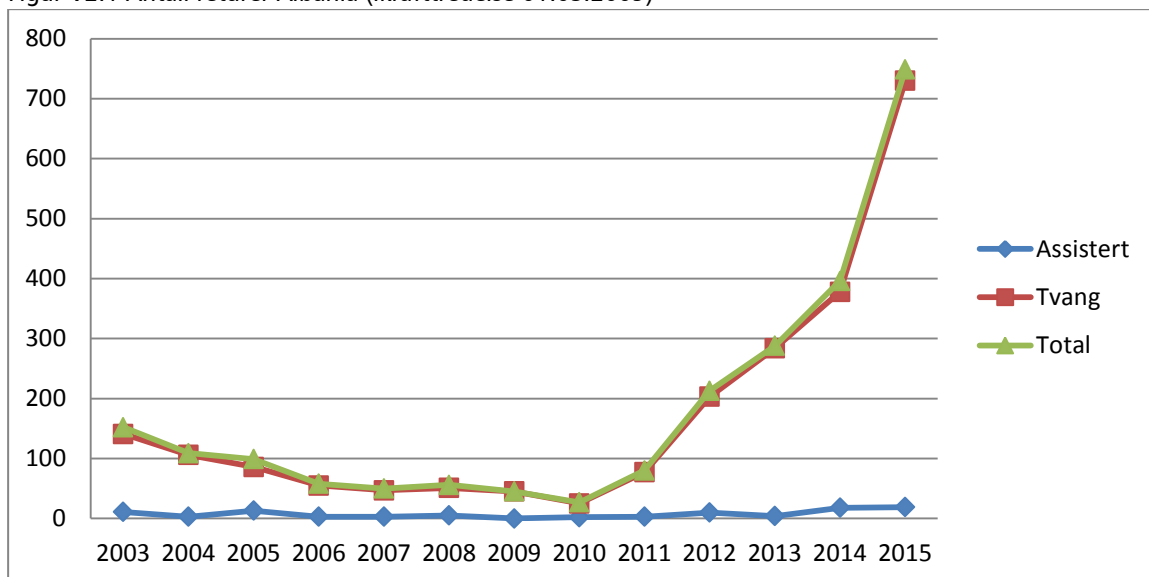


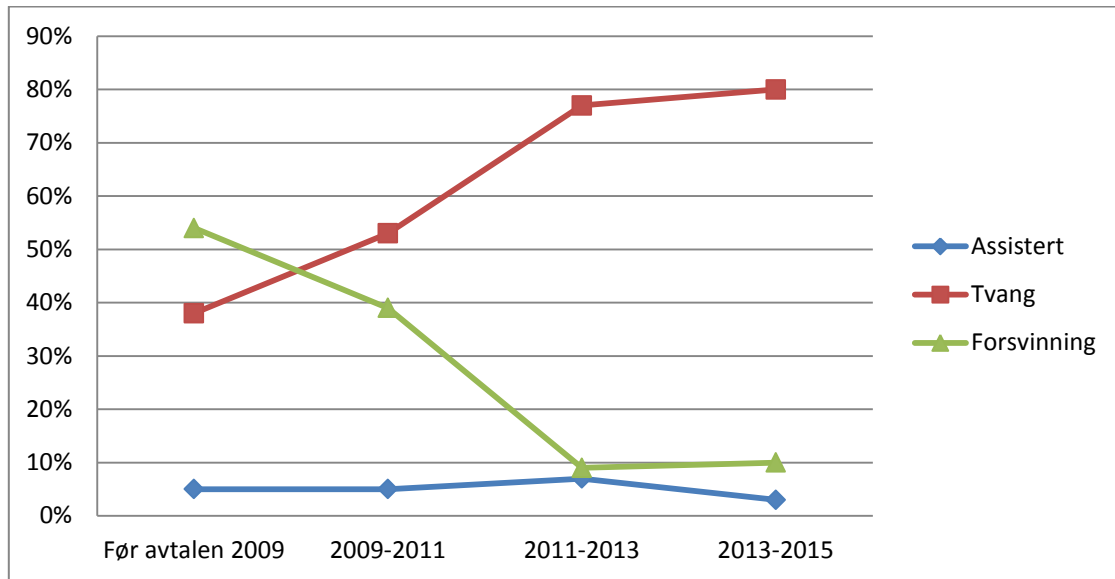
Vedlegg 2 Grafer for øvrige returavtaler

I dette vedlegget finner du alle grafene som viser tendensene land for land, for alle returavtalene hvor dette ikke ble fullt presentert i hovedteksten. De er her sortert etter land, men uten noen kommentarer til funnene. For diskusjon, se kapittel 4, og for metode, se kapittel 3.

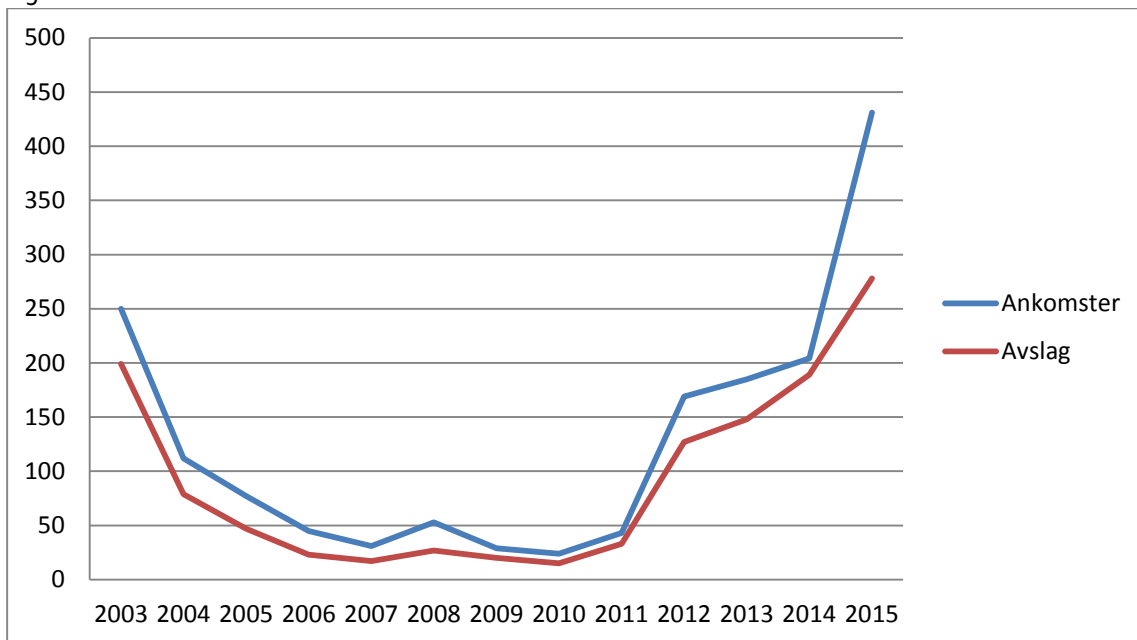
Figur V2.1 Antall returer Albania (ikraftttredelse 01.05.2009)



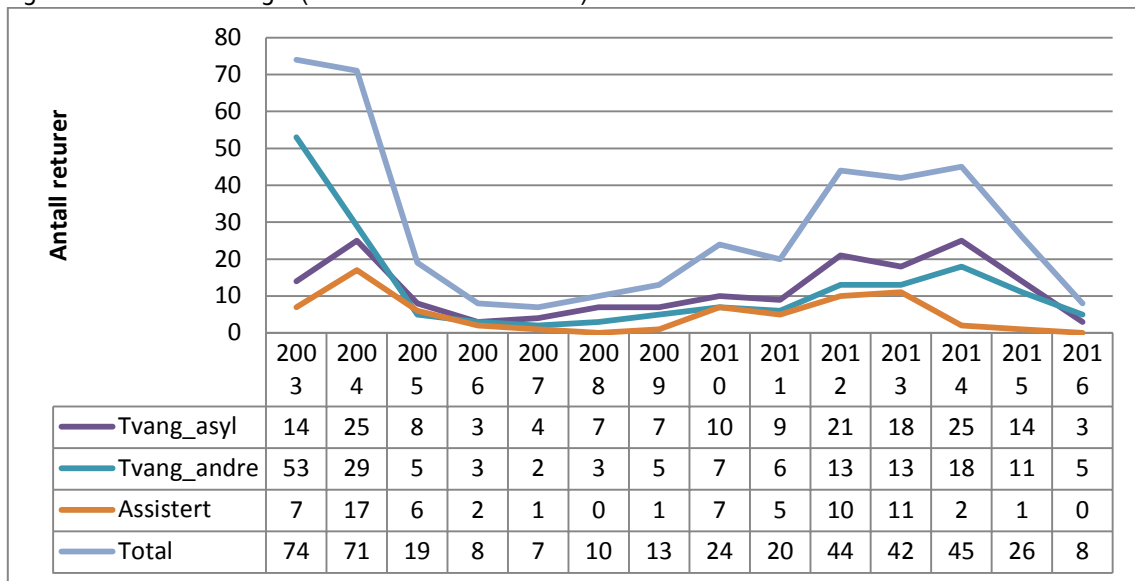
Figur V2.2 Sannsynlig retur Albania. N=862



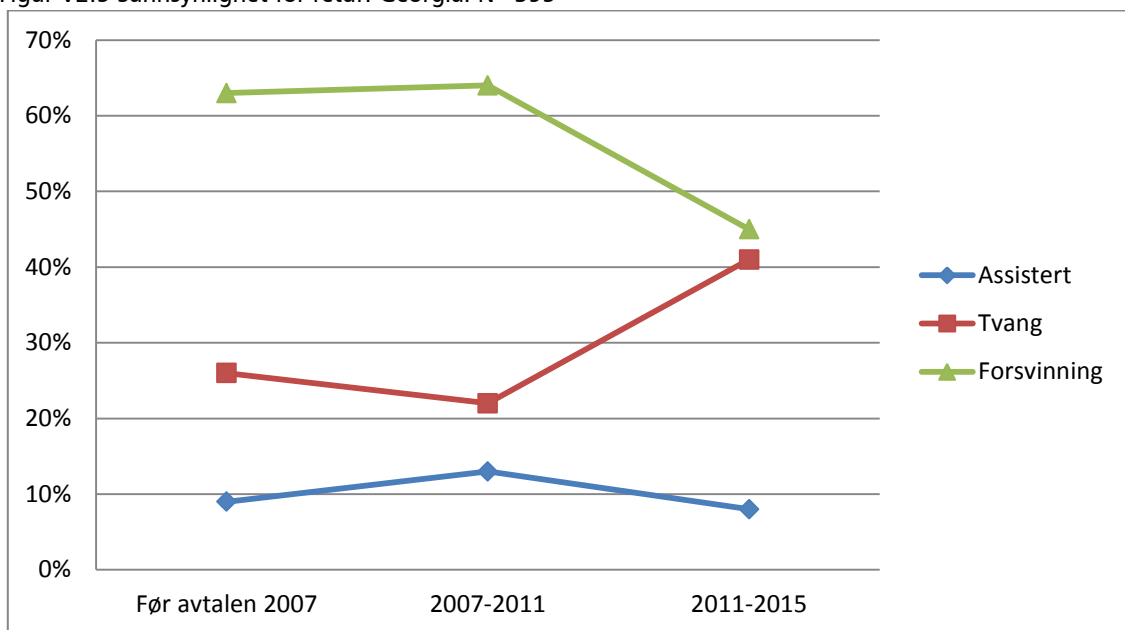
Figur V2.3 Ankomster Albania



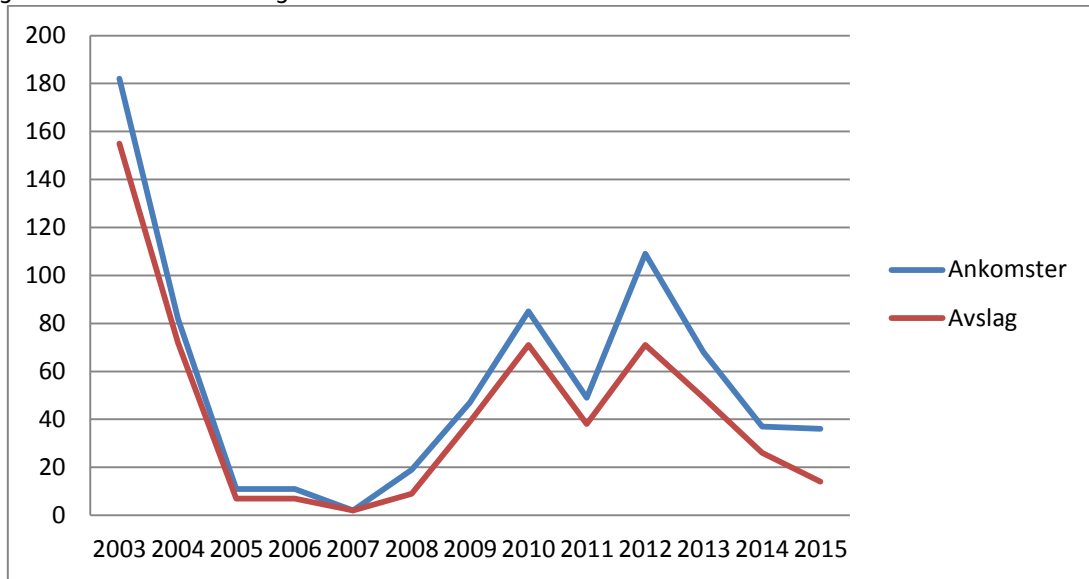
Figur V2.4 Returer Georgia (ikrafttredelse 25.01.2012)



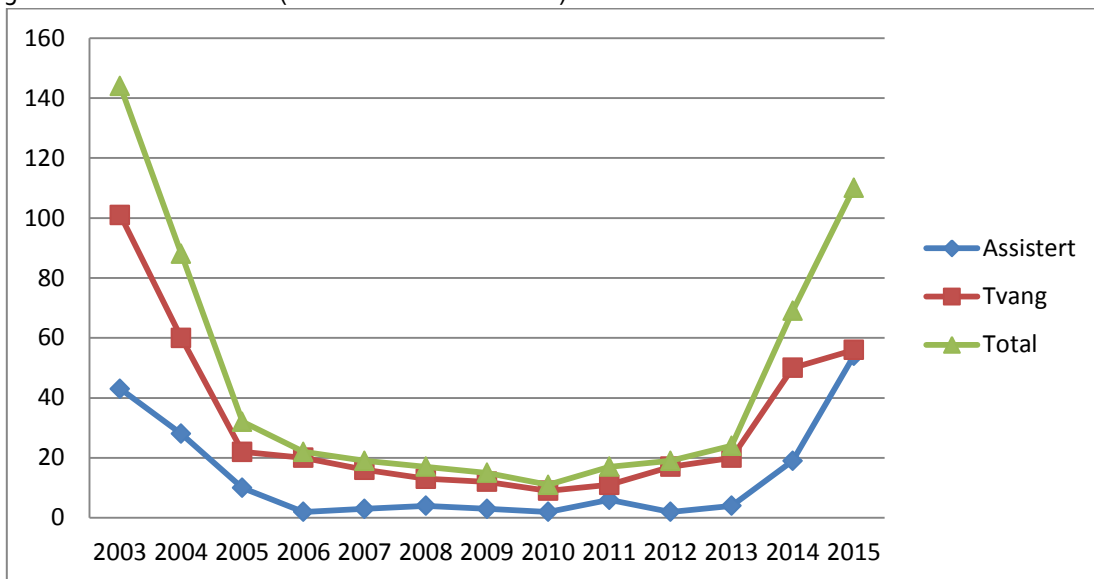
Figur V2.5 Sannsynlighet for retur: Georgia. N=395



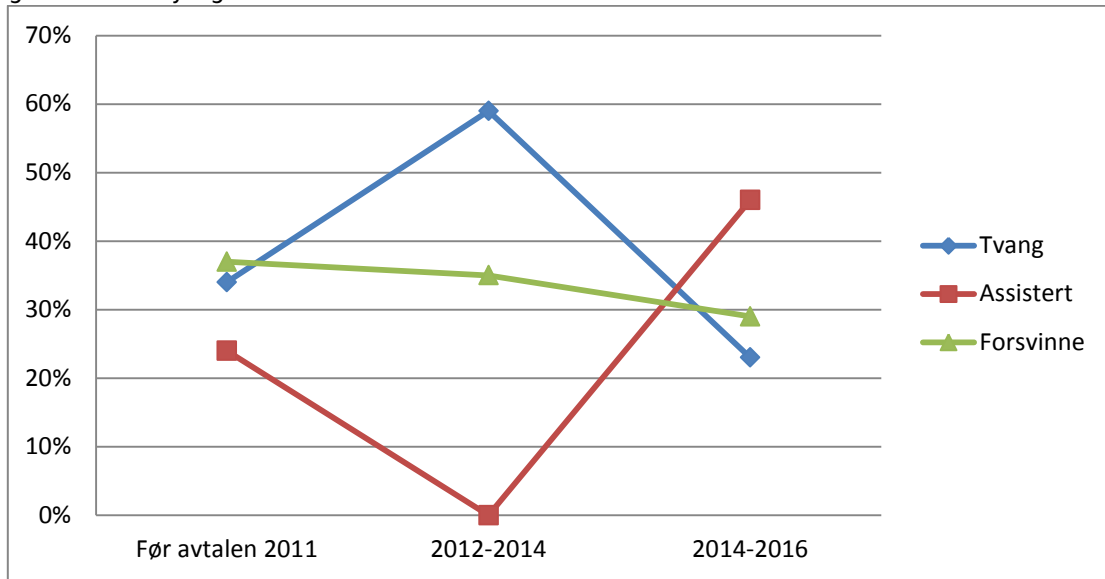
Figur V2.6 Ankomster Georgia



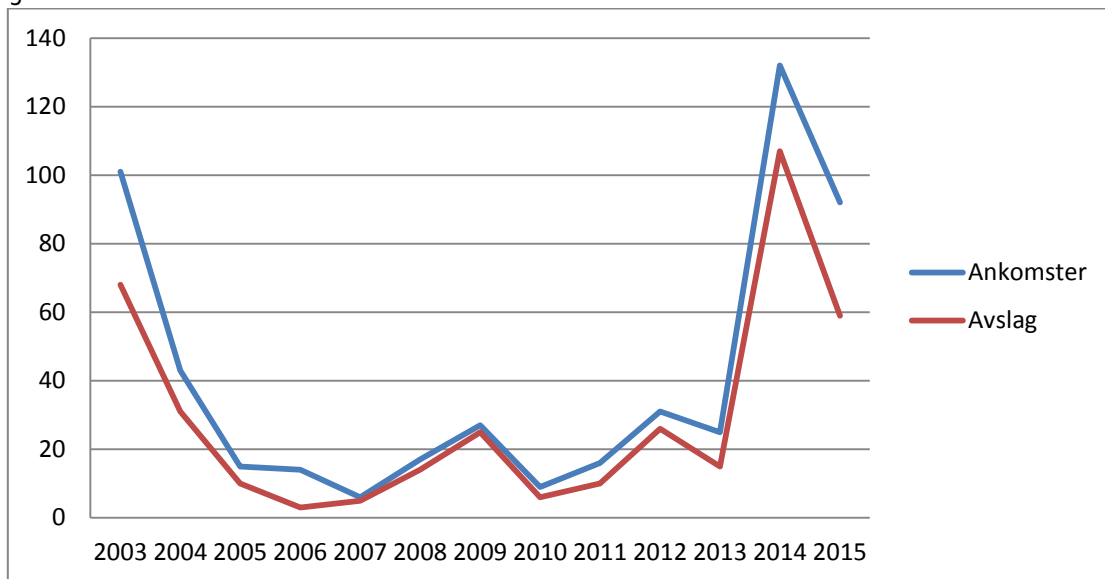
Figur V2.7 Returer Ukraina (ikrafttredelse 01.09.2011)



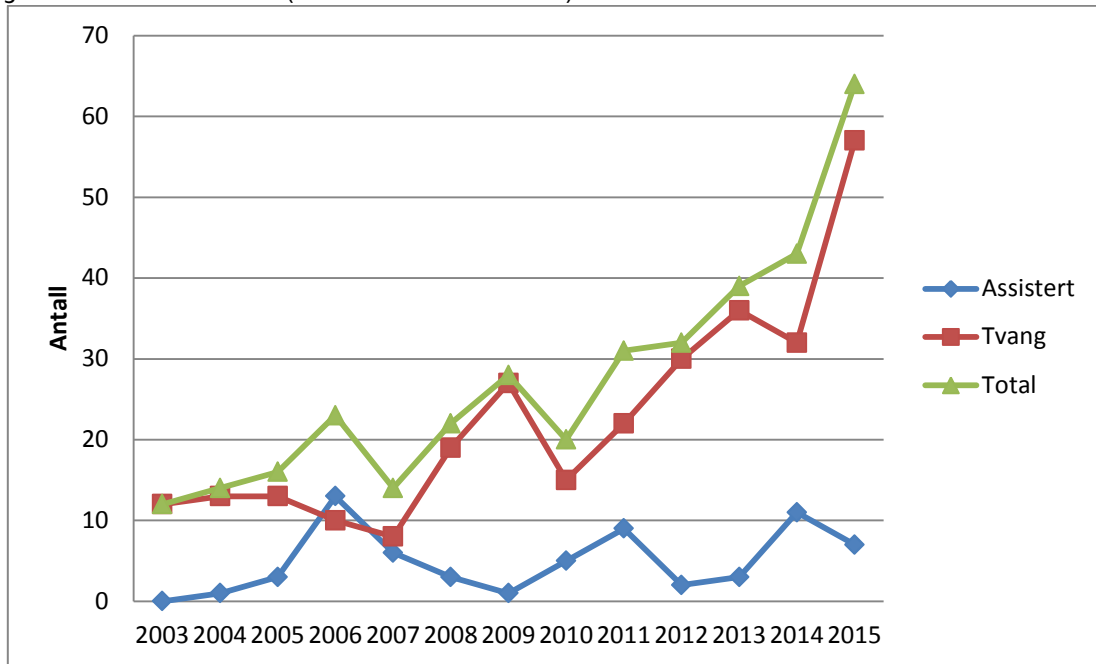
Figur V2.8 Sannsynlighet for retur: Ukraina. N=213



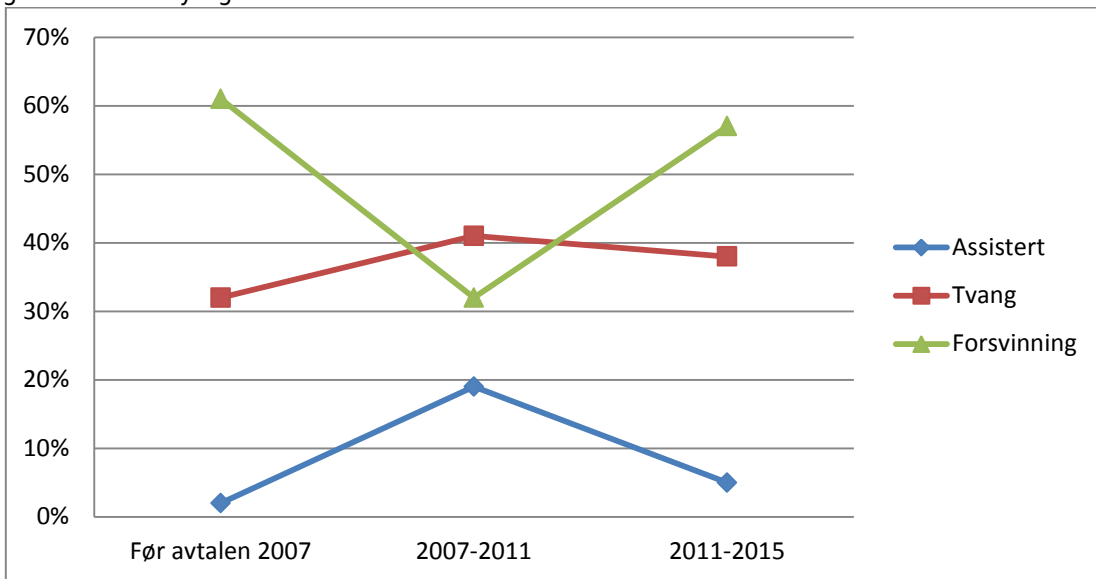
Figur V2.9 Ankomster Ukraina



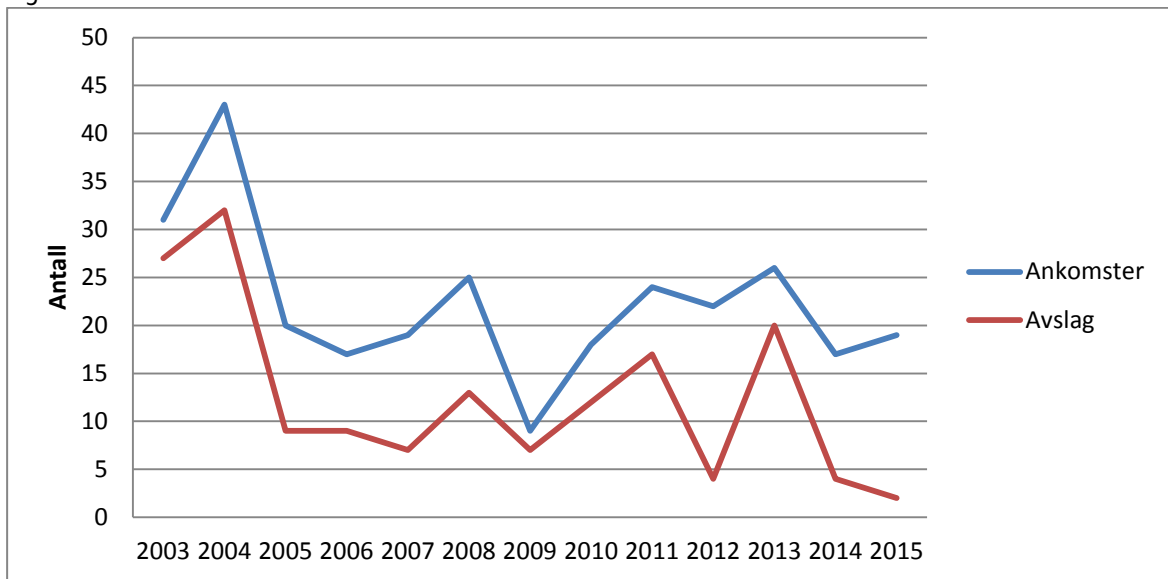
Figur V2.9 Returer Vietnam (ikrafttredelse 14.10.2007)



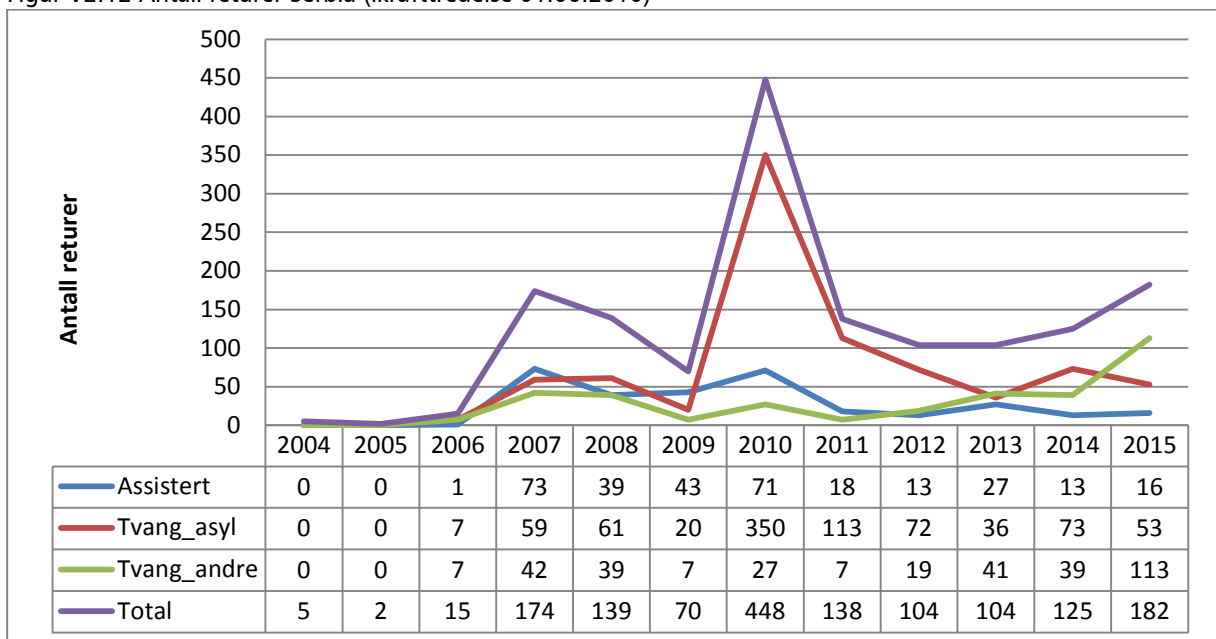
Figur V2.10 Sannsynlighet for retur: Vietnam. N=106



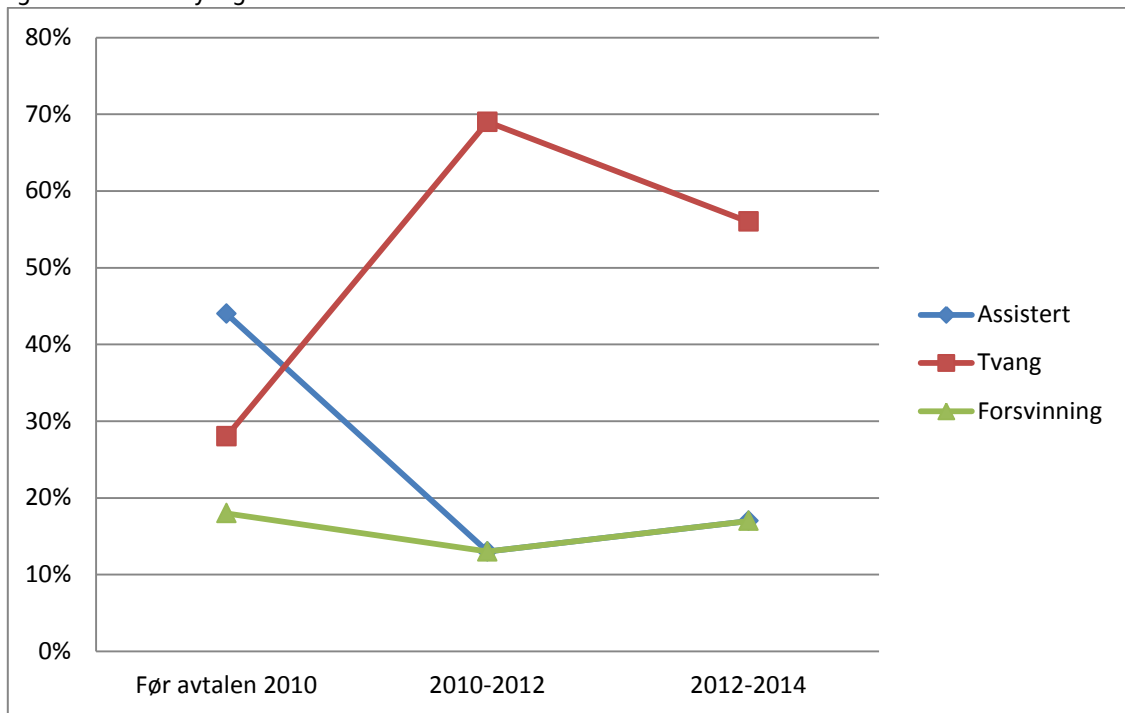
Figur V2.11 Ankomster Vietnam



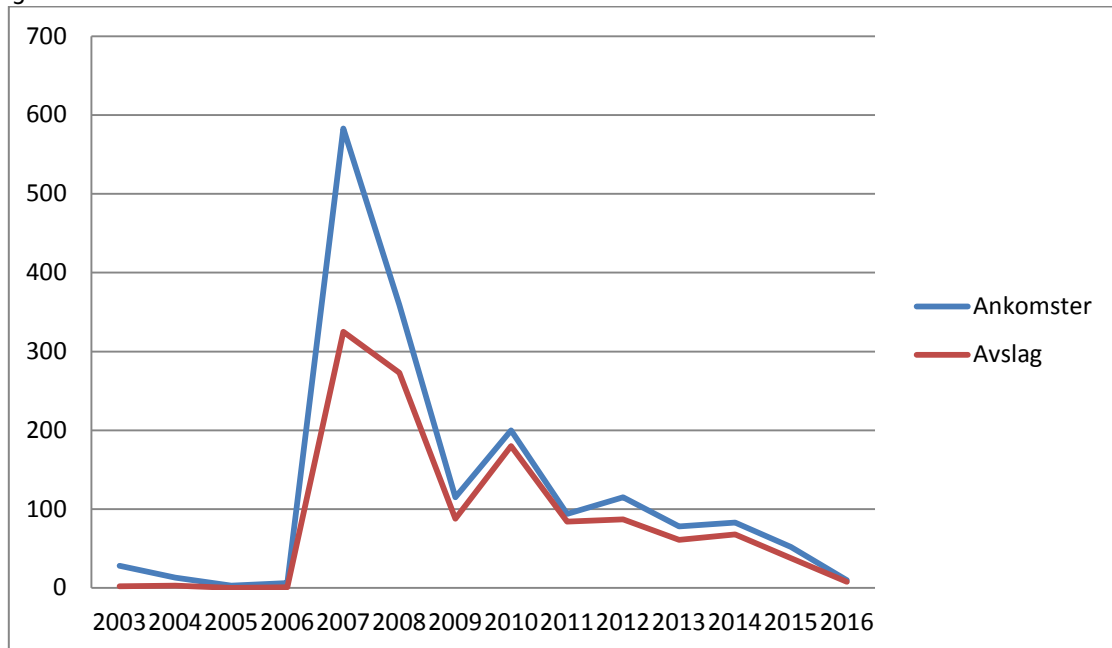
Figur V2.12 Antall returner Serbia (ikrafttredelse 01.06.2010)



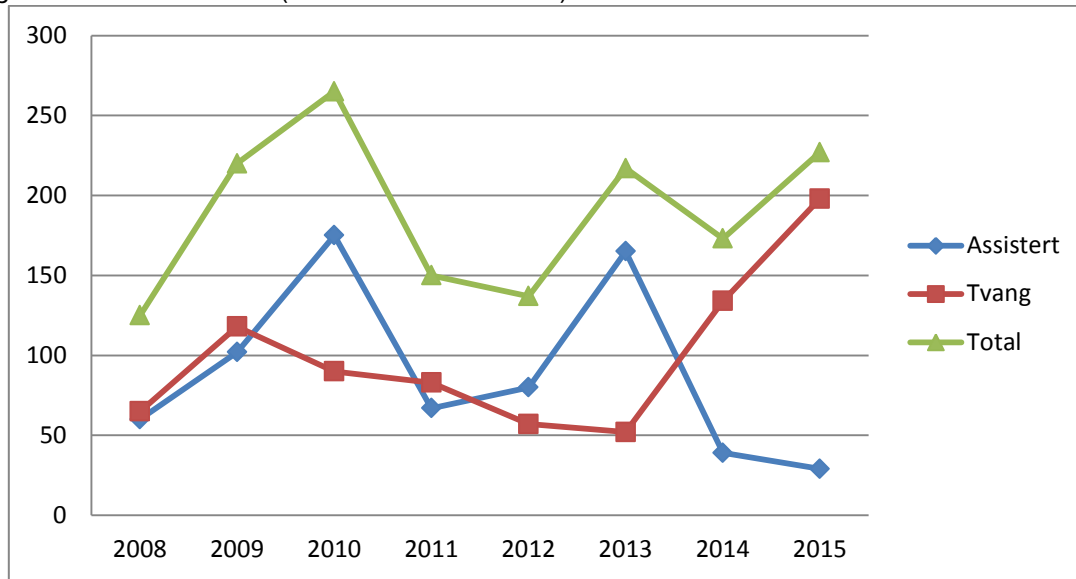
Figur V2.13 Sannsynlighet for retur Serbia. N=850



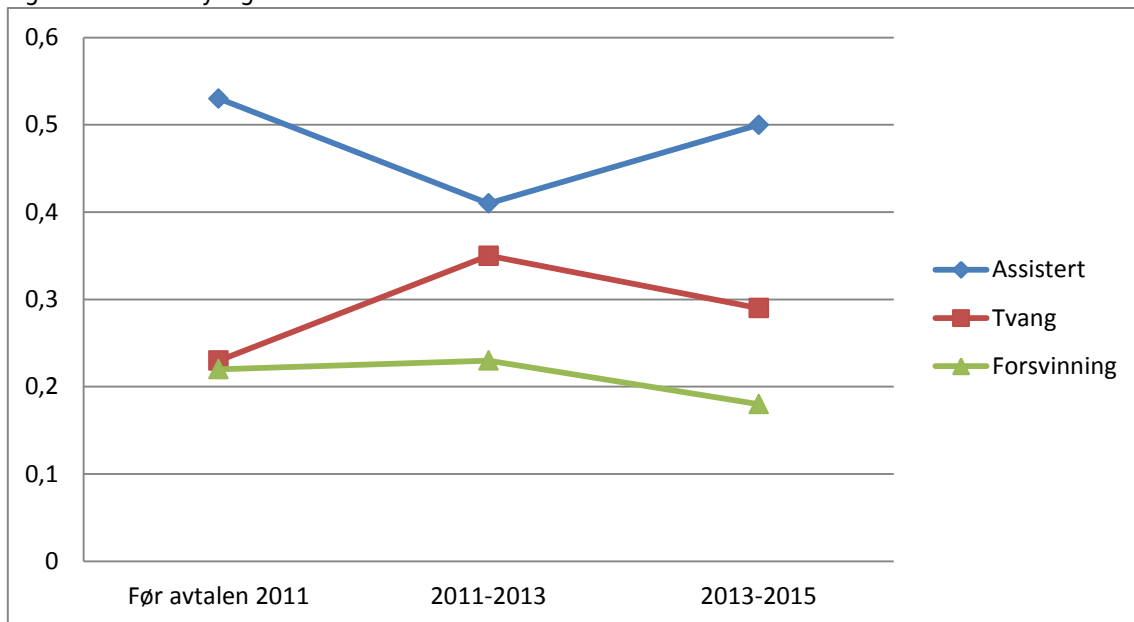
Figur V2.14 Ankomster Serbia



Figur V2.15 Returer Kosovo (ikrafttredelse 01.01.2011)



Figur V2.16 Sannsynlighet for retur Kosovo. N=739



Figur V2.17 Ankomster Kosovo

